

RAVENS COURT  
PARK W6

# CLOCKWORK BUILDING

6,325 SQ FT  
OFFICE AVAILABLE





# WELCOME TO THE CLOCKWORK BUILDING

.....

This innovatively refurbished, contemporary office building provides 6,325 sq ft of modern workspace with a sophisticated industrial aesthetic.

Here, an abundance of mood-boosting natural light combines with worn timber, concrete columns and crisp white walls to create a cool, calming environment across the third and fourth floors. Beautifully designed outdoor spaces, including landscaped gardens, provide the perfect excuse to escape into nature, while panoramic views from our rooftop terrace over the Thames and London skyline can't help but enhance your day.

CLOCKWORK BUILDING







# A DESIGN ICON

## CLOCKWORK BUILDING

The Clockwork Building has a whole lot of heritage.

Designed by renowned architect Richard Seifert, the building stands on a site once home to IBM's precursor, the International Time Recording Company. Seifert is best known for his office buildings that shaped the architecture of modern Britain, among them NatWest Tower, Centre Point and Alpha Tower.

The refurbishment emphasises the unique characteristics of the original building and the site's history to create modern workspace that exudes integrity, elegance and attention to detail, making it the perfect place for creative businesses.





# RIVERSIDE NEIGHBOURHOOD



Ravenscourt Park is a charming, characterful neighbourhood with a rich heritage and a stunning waterside location. There's plenty to do with authentic pubs, great restaurants, leisure activities and a trove of hidden treasures. Local favourites include The Carpenter's Arms, The Cross Keys and L'Amorosa.

The Thames is right on your doorstep, so there's no better way to clear your head than a lunchtime riverside walk. Or take a stroll and explore one of the many green spaces such as Furnival Gardens, St Peter's Square or the park itself with its tennis courts, a bowling lawn, and putting green.





# GET AROUND

## EARL'S COURT

8 MINS

## PADDINGTON

15 MINS

## VICTORIA

18 MINS

## WATERLOO

24 MINS

## KING'S CROSS ST PANCRAS

27 MINS

## HEATHROW AIRPORT

35 MINS

The Clockwork Building is a few minutes' walk from Ravenscourt Park Underground Station on the District Line. And you're just a two-minute journey from Hammersmith Broadway with Piccadilly, Circle and Hammersmith & City Line connections.

If you ride to work, it's easy to get here along one of the riverside cycling routes. The Clockwork Building has plenty of secure bike storage, showers and drying/locker rooms.

## CLOCKWORK BUILDING

### FOOD & DRINK

1. The Elder Press Café
2. Artisan Coffee
3. L'Amorosa
4. Polti Indian Restaurant
5. Tosa Japanese Restaurant
6. Azou Restaurant
7. What The Fish
8. The Old Ship
9. The Carpenter's Arms
10. The Cross Keys
11. The Hampshire
12. The Dove
13. The Black Lion

### MIND & BODY

1. State of Mind Fitness
2. RavensWall Climbing Centre
3. Lumi Power Yoga
4. Ravenscourt Park
5. Furnivall Gardens
6. Auriol Kensington Rowing Club
7. Tribe - CrossFit

### ARTS & CULTURE

1. Hammersmith & Fulham's Civic Campus
2. Lyric Hammersmith

### USEFUL SPOTS

1. Tesco Express
2. Sainsbury's Local
3. Post Office





# EVERYTHING YOU NEED TO THRIVE



## CLOCKWORK BUILDING



### WELCOME

New 1,492 sq ft reception



### GARDENS AND TERRACES

Landscaped communal gardens  
and roof terrace with river views



### INDUSTRIAL CHIC

High, exposed concrete  
ceilings and high-quality  
timber flooring



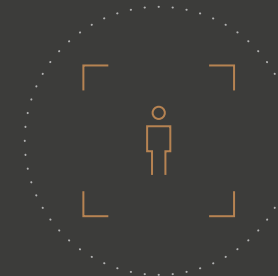
### LIGHT AND BRIGHT

High-performance double-  
glazed aluminium windows



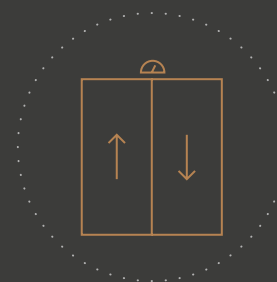
### EFFICIENT SERVICES

VRF air cooling and heating, energy-  
efficient linear T5 fluorescent luminaires,  
perimeter three-compartment CAT5e  
compliant galvanized steel trunking



### AMPLE SPACE

Base specification  
occupancy designed at one  
person per 8 sq m



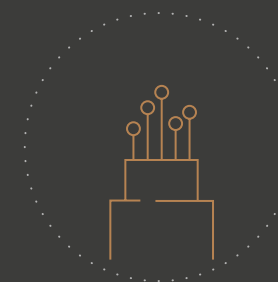
### LIFTS

Two new 10-person  
passenger lifts



### ACCESS AND SECURITY

CCTV and access control system,  
24hr building management



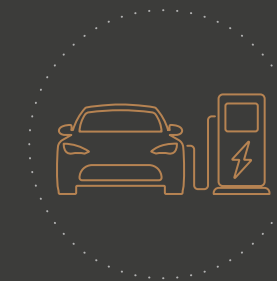
### WORK FAST

Broadband speed of  
1 gigabyte per second



### BIKE AND SHOWERS

Cycle storage, showers,  
drying/locker rooms



### CHARGE UP

Electric car charging points



### PARK UP

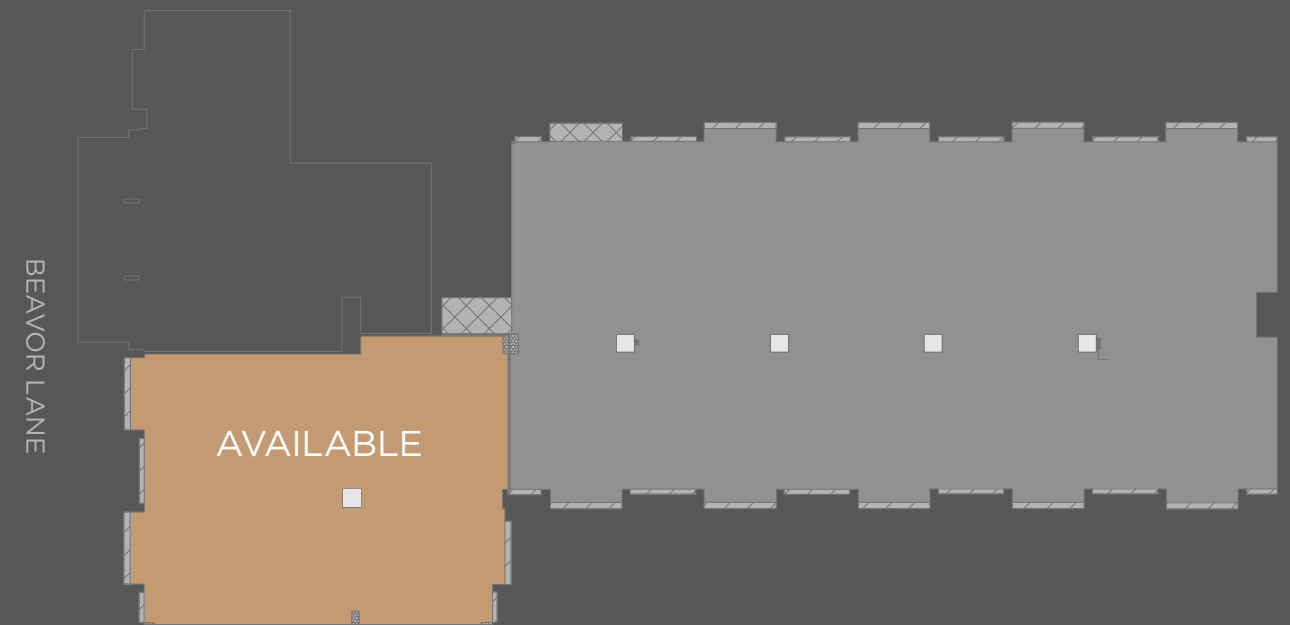
18 secure car parking spaces



THIRD EAST  
4,609 sq ft



GROUND SOUTH  
1,716 sq ft



FIND YOUR  
SPACE





frost  
meadowcroft  
020 8748 1200



.....

SHAUN WOLFE  
07900 911 135  
020 8748 1200  
swolfe@frostmeadowcroft.com

.....

DAVID CUTHBERT  
07710 183 423  
020 3130 6401  
dcuthbert@hanovergreen.co.uk

Important Notice: Frost Meadowcroft and Hanover Green give notice that:

1. They are not authorised to make or give any representations or warranties in relation to the property either here or elsewhere, either on their own behalf or on behalf of their client or otherwise. They assume no responsibility for any statement that may be made in these particulars. These particulars do not form part of any offer or contract and must not be relied upon as statements or representations of fact. 2. Any areas, measurements or distances are approximate. The text, photographs and plans are for guidance only and are not necessarily comprehensive. It should not be assumed that the property has all necessary planning, building regulation or other consents and Frost Meadowcroft and Hanover Green have not tested any services, equipment or facilities. Purchasers must satisfy themselves by inspection or otherwise. December 2025.

Designed and produced by Graphicks | 020 3435 6952 | [www.graphicks.co.uk](http://www.graphicks.co.uk)